



Luoyang JCB Bearing Technology Company Limited

3R10-111N2F

SLEWING BEARING

THREE ROW ROLLER SLEWING BEARING





Luoyang JCB Bearing Technology Company Limited

CONTENTS

01.

[MAIN SPECIFICATION](#)

02.

[TECHNICAL INFORMATION](#)

03.

[MANUFACTURE & INSPECTION](#)

04.

[PACKING AND STORAGE](#)

05.

[WARRANTY & CERTIFICATE](#)



Luoyang JCB Bearing Technology Company Limited

3R10-111N2F

01

MAIN SPECIFICATION

- [REFERENCE DRAWING](#)
- [SPECIFICATION](#)
- [RAW MATERIAL](#)
- [LUBRICATIONA](#)
- [BOLT HOLES TYPE & BOLTS](#)
- [CORROSION PROTECTION](#)

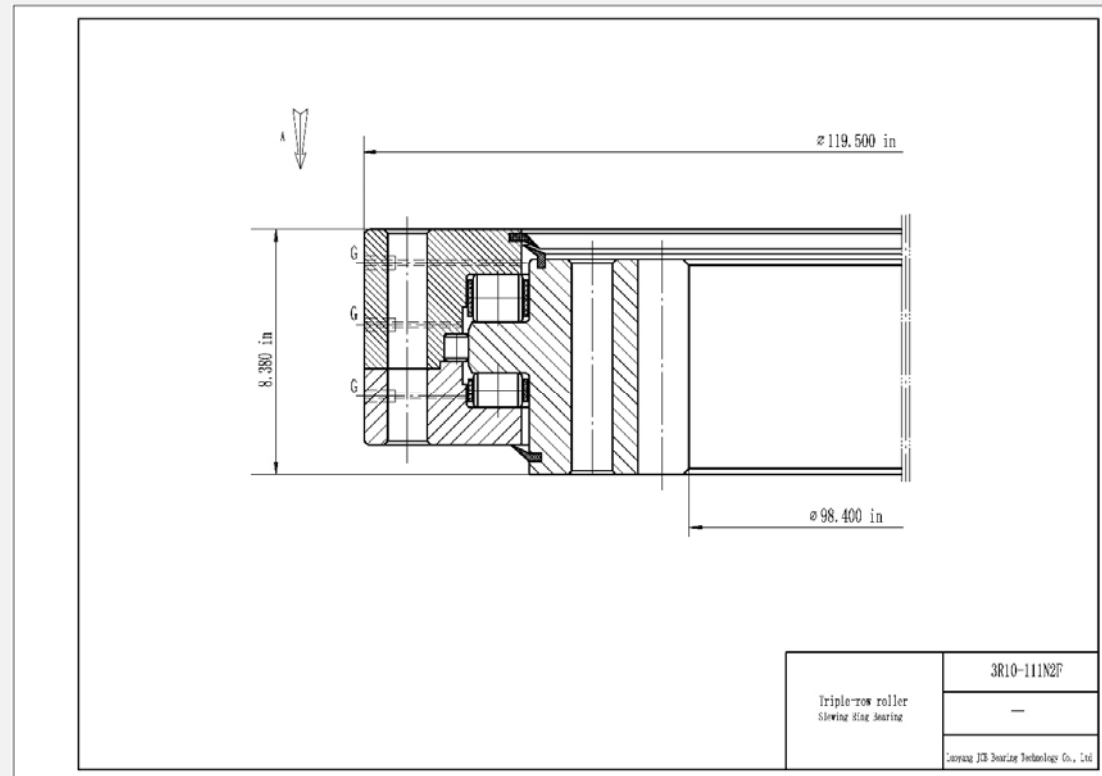


Luoyang JCB Bearing Technology Company Limited

3R10-111N2F

REFERENCE DRAWING

This drawing is reference for user, if user request for formal drawing , please contact with us: sales@jcb-bearing.com, the official drawing will be submitted to them.



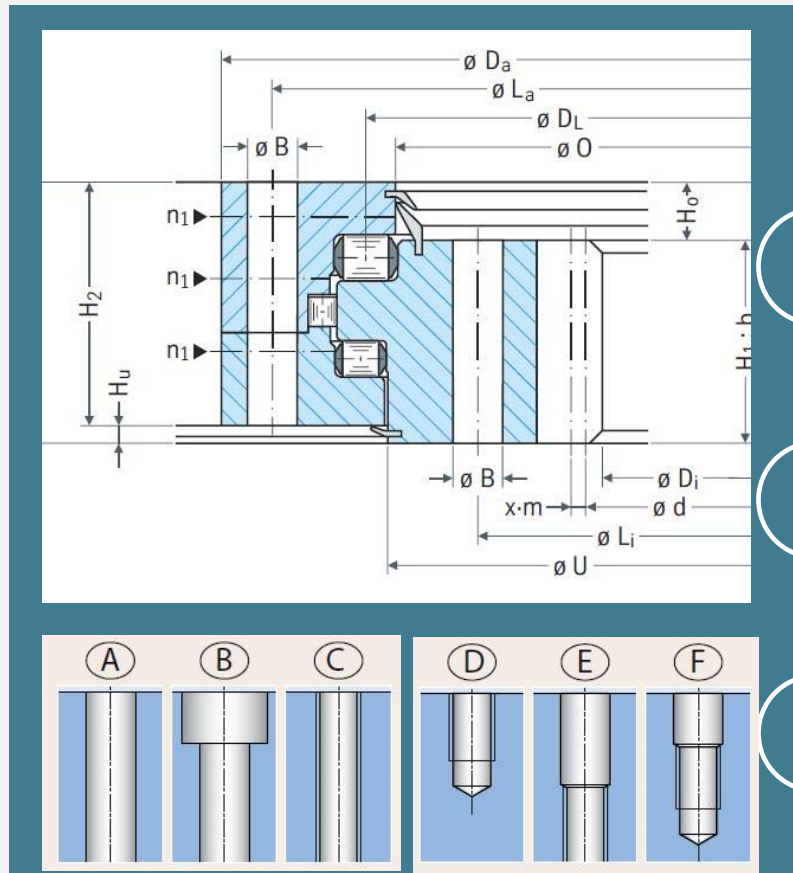
01-2

Luoyang JCB Bearing Technology Company Limited



SPECIFICATION

3R10-111N2F



- Inner diameter (di): 98.400 in
- Outer diameter (Da): 119.500 in
- Overall height (H): 8.380 in
- Outer ring height (Ho): 6.810 in
- Inner ring height (Hi): 6.880 in
- Weight: 6862 lbs
- External bolt circle dia (Lo): 122.812 in
- Number of bolt holes per hole circle (no):48
- External bolt hole type : Selected by user
- External bolt hole diameter (Bo): 1.56 in
- Internal bolt circle dia (Li): 112.250 in
- Number of bolt holes per hole circle (ni): 72
- Internal bolt hole type : Selected by user
- Internal bolt hole diameter (Bi): 1 1/2-6 in
- Tooth number (z):161
- Module of gear (DP):1.5
- Tooth width (b2): 6.880 in