



Luoyang JCB Bearing Technology Company Limited

3R16-220N1

SLEWING BEARING

THREE ROW ROLLER SLEWING BEARING





Luoyang JCB Bearing Technology Company Limited

CONTENTS

01.

[MAIN SPECIFICATION](#)

02.

[TECHNICAL INFORMATION](#)

03.

[MANUFACTURE & INSPECTION](#)

04.

[PACKING AND STORAGE](#)

05.

[WARRANTY & CERTIFICATE](#)



Luoyang JCB Bearing Technology Company Limited

3R16-220N1

01

MAIN SPECIFICATION

- [REFERENCE DRAWING](#)
- [SPECIFICATION](#)
- [RAW MATERIAL](#)
- [LUBRICATIONA](#)
- [BOLT HOLES TYPE & BOLTS](#)
- [CORROSION PROTECTION](#)

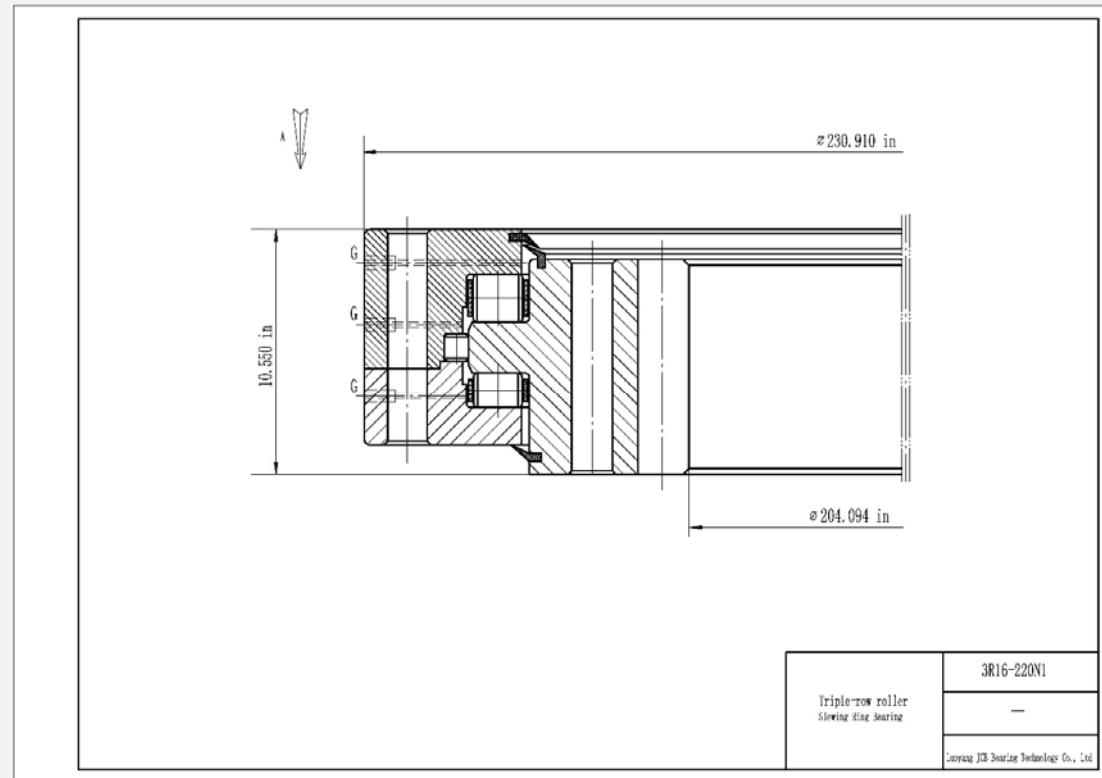


Luoyang JCB Bearing Technology Company Limited

3R16-220N1

REFERENCE DRAWING

This drawing is reference for user, if user request for formal drawing , please contact with us: sales@jcb-bearing.com, the official drawing will be submitted to them.



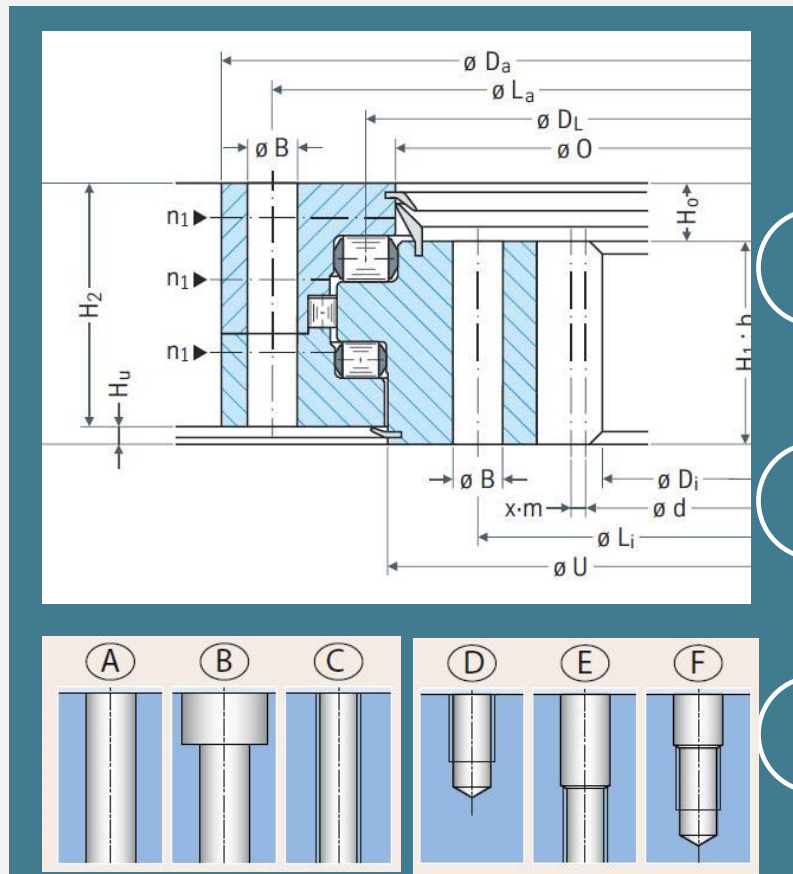
01-2

Luoyang JCB Bearing Technology Company Limited

SPECIFICATION



3R16-220N1



Inner diameter (di): 204.094 in
Outer diameter (Da): 230.910 in
Overall height (H): 10.550 in
Outer ring height (Ho): 10.180 in
Inner ring height (Hi): 7.990 in
Weight: 20541 lbs
External bolt circle dia (Lo): 227.362 in
Number of bolt holes per hole circle (no):90
External bolt hole type : Selected by user
External bolt hole diameter (Bo): 1.77 in
Internal bolt circle dia (Li): 212.598 in
Number of bolt holes per hole circle (ni): 90
Internal bolt hole type : Selected by user
Internal bolt hole diameter (Bi): 1.77 in
Tooth number (z):217
Module of gear (m):24
Tooth width (b2): 7.990 in