



**Luoyang JCB Bearing Technology Company Limited**

**E.2.138-306**

# **SLEWING BEARING**

**DOUBLE ROW BALL SLEWING BEARING**





# Luoyang JCB Bearing Technology Company Limited

## CONTENTS

01.

[MAIN SPECIFICATION](#)

02.

[TECHNICAL INFORMATION](#)

03.

[MANUFACTURE & INSPECTION](#)

04.

[PACKING AND STORAGE](#)

05.

[WARRANTY & CERTIFICATE](#)



**Luoyang JCB Bearing Technology Company Limited**

## **E.2.138-306**

01

### **MAIN SPECIFICATION**

- REFERENCE DRAWING
- SPECIFICATION
- RAW MATERIAL
- LUBRICATIONA
- BOLT HOLES TYPE & BOLTS
- CORROSION PROTECTION

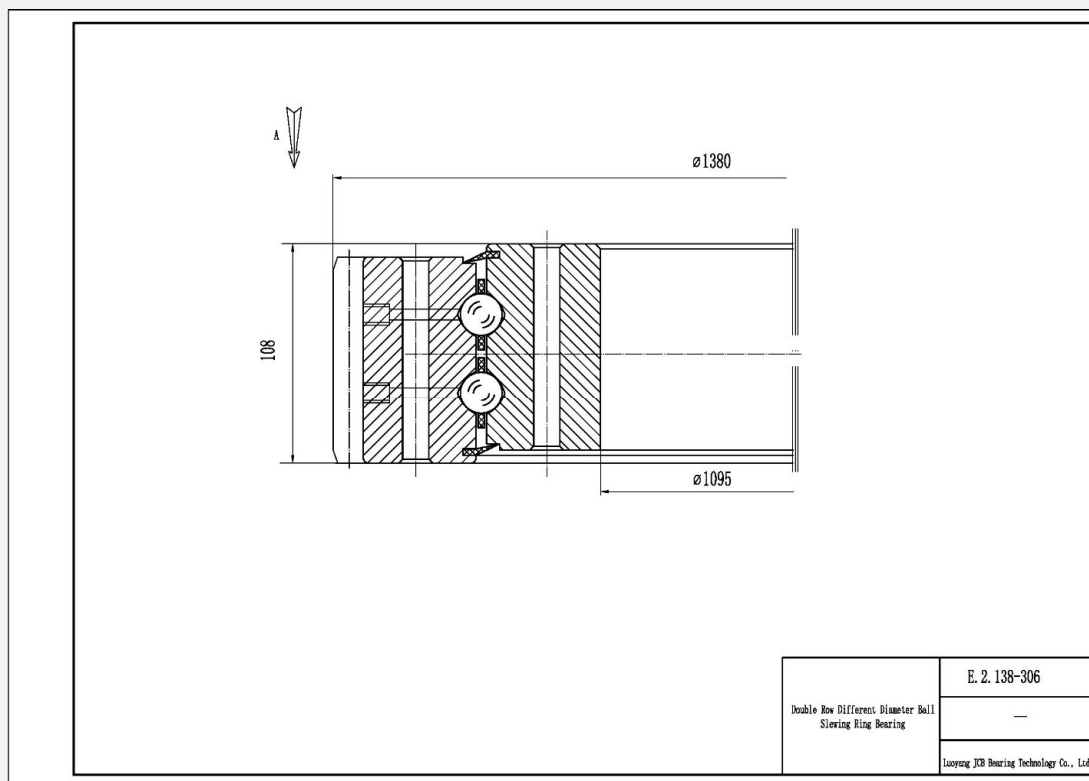


# Luoyang JCB Bearing Technology Company Limited

## E.2.138-306

### REFERENCE DRAWING

This drawing is reference for user, if user request for formal drawing , please contact with us: [sales@jcb-bearing.com](mailto:sales@jcb-bearing.com), the official drawing will be submitted to them.



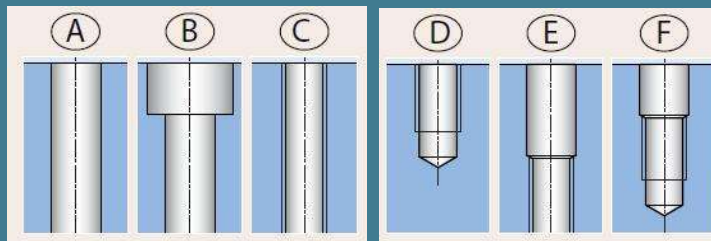
01-2

Luoyang JCB Bearing Technology Company Limited



## SPECIFICATION

### E.2.138-306



- Inner diameter (d) :1095
- Outer diameter (D) :1380
- Overall height (T) :108
- Outer ring height (H1):98
- Inner ring height (H2):98
- Weight: 325 KG
- External bolt circle dia (J1) : 1290
- Number of bolt holes per hole circle (n1) :48
- External bolt hole type : Selected by user
- External bolt hole diameter(N1) :23
- Internal bolt circle dia(J2): 1135
- Number of bolt holes per hole circle(n2): 48
- Internal bolt hole type : Selected by user
- Internal bolt hole diameter (N2) :23
- Tooth number :136
- Module of gear :10
- Tooth width (B) : 90