



Luoyang JCB Bearing Technology Company Limited

VI134B02

SLEWING BEARING

DOUBLE ROW BALL SLEWING BEARING





Luoyang JCB Bearing Technology Company Limited

CONTENTS

01.

[MAIN SPECIFICATION](#)

02.

[TECHNICAL INFORMATION](#)

03.

[MANUFACTURE & INSPECTION](#)

04.

[PACKING AND STORAGE](#)

05.

[WARRANTY & CERTIFICATE](#)



Luoyang JCB Bearing Technology Company Limited

VI134B02

01

MAIN SPECIFICATION

- [REFERENCE DRAWING](#)
- [SPECIFICATION](#)
- [RAW MATERIAL](#)
- [LUBRICATIONA](#)
- [BOLT HOLES TYPE & BOLTS](#)
- [CORROSION PROTECTION](#)

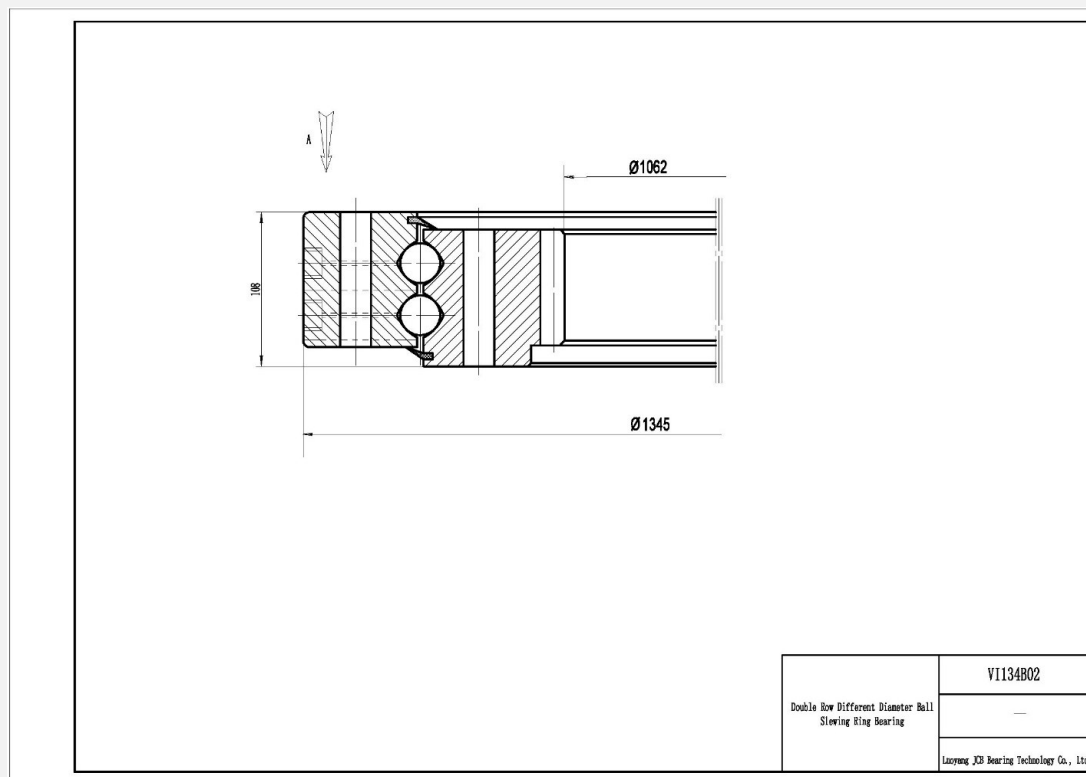


Luoyang JCB Bearing Technology Company Limited

VI134B02

REFERENCE DRAWING

This drawing is reference for user, if user request for formal drawing , please contact with us: sales@jcb-bearing.com, the official drawing will be submitted to them.



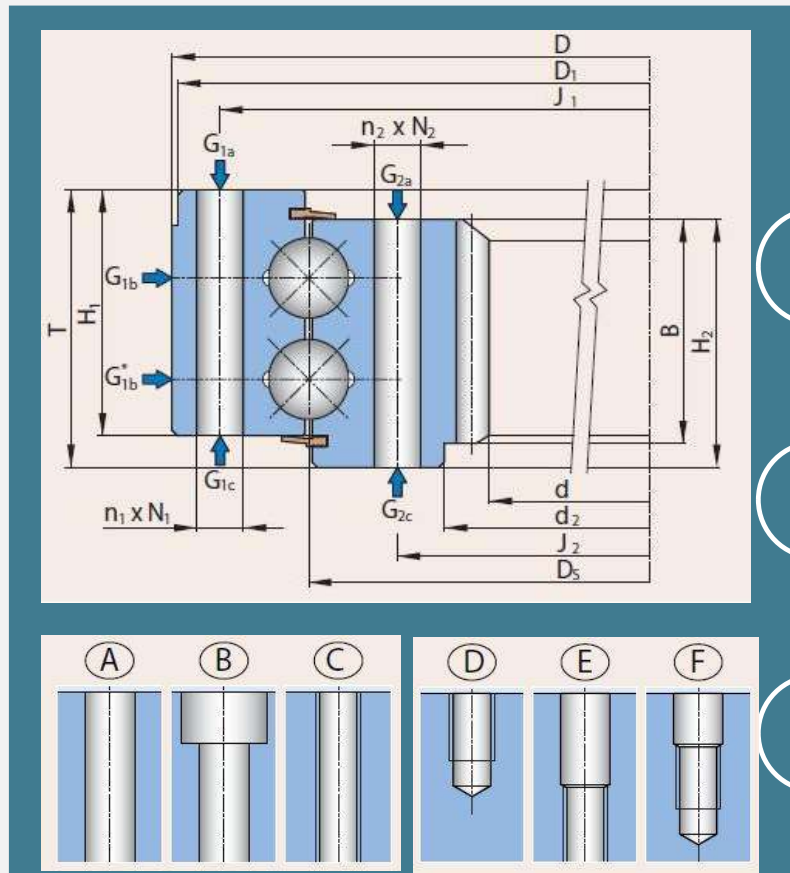
01-2

Luoyang JCB Bearing Technology Company Limited



SPECIFICATION

VI134B02



- Inner diameter (d) :1062
- Outer diameter (D) :1345
- Overall height (T) :108
- Outer ring height (H1):-
- Inner ring height (H2):-
- Weight: 337 KG
- External bolt circle dia (J1) : 1290
- Number of bolt holes per hole circle (n1) :40
- External bolt hole type : Selected by user
- External bolt hole diameter(N1) :M20
- Internal bolt circle dia(J2):1150
- Number of bolt holes per hole circle(n2): 40
- Internal bolt hole type : Selected by user
- Internal bolt hole diameter (N2) :M20
- Tooth number :108
- Module of gear :10
- Tooth width (B) : 88